

Test Report

No. : KA/2013/40887 Date : 2013/04/23 Page : 1 of 8

WELON ELECTRONIC ENTERPRISE CORP.
NO.123, GUOXUAN RD., GANGSHAN DIST., KAOHSIUNG CITY 820, TAIWAN
(R.O.C.)

The following sample(s) was/were submitted and identified by/on behalf of the client as :

Sample Description : SURFACE MOUNT TYPE OF TANTALUM ELECTROLYTIC CAPACITORS
Style/Item No. : SERIES CS
Sample Receiving Date : 2013/04/12
Testing Period : 2013/04/12 TO 2013/04/23
Sample Submitted By : WELON ELECTRONIC ENTERPRISE CORP.

=====
Test Result(s) : Please refer to next page(s).



Ray Chang / Asst. Manager
Signed for and on behalf of
SGS Taiwan Limited

Unless otherwise stated the results shown in this test report refer only to the sample(s) tested. This test report cannot be reproduced, except in full, without prior written permission of the Company. 除非另有說明，此報告結果僅對測試之樣品負責。本報告未經本公司書面許可，不可部分複製。
This document is issued by the Company subject to its General Conditions of Service printed overleaf, available on request or accessible at www.sgs.com/terms_and_conditions.htm and, for electronic format documents, subject to Terms and Conditions for Electronic Documents at www.sgs.com/terms_e-document.htm. Attention is drawn to the limitation of liability, indemnification and jurisdiction issues defined therein. Any holder of this document is advised that information contained hereon reflects the Company's findings at the time of its intervention only and within the limits of Client's instructions, if any. The Company's sole responsibility is to its Client and this document does not exonerate parties to a transaction from exercising all their rights and obligations under the transaction documents. This document cannot be reproduced except in full, without prior written approval of the Company. Any unauthorized alteration, forgery or falsification of the content or appearance of this document is unlawful and offenders may be prosecuted to the fullest extent of the law.

WELON ELECTRONIC ENTERPRISE CORP.
NO.123, GUOXUAN RD., GANGSHAN DIST., KAOHSIUNG CITY 820, TAIWAN
(R.O.C.)

Test Result(s)

PART NAME NO.1 : MIXED ALL PARTS:SURFACE MOUNT TYPE OF TANTALUM ELECTROLYTIC CAPACITORS

Test Item (s):	Unit	Method	MDL	Result		
				No.1		
Cadmium (Cd)	mg/kg	With reference to IEC 62321: 2008 and performed by ICP-AES.	2	n.d.		
Lead (Pb)	mg/kg	With reference to IEC 62321: 2008 and performed by ICP-AES.	2	n.d.		
Mercury (Hg)	mg/kg	With reference to IEC 62321: 2008 and performed by ICP-AES.	2	n.d.		
Hexavalent Chromium Cr(VI) by alkaline extraction	mg/kg	With reference to IEC 62321: 2008 and performed by UV-VIS.	2	n.d.		
Sum of PBBs			-	n.d.		
Monobromobiphenyl	mg/kg	With reference to IEC 62321: 2008 and performed by GC/MS.	5	n.d.		
Dibromobiphenyl			5	n.d.		
Tribromobiphenyl			5	n.d.		
Tetrabromobiphenyl			5	n.d.		
Pentabromobiphenyl			5	n.d.		
Hexabromobiphenyl			5	n.d.		
Heptabromobiphenyl			5	n.d.		
Octabromobiphenyl			5	n.d.		
Nonabromobiphenyl			5	n.d.		
Decabromobiphenyl			5	n.d.		
Sum of PBDEs					-	n.d.
Monobromodiphenyl ether			mg/kg	With reference to IEC 62321: 2008 and performed by GC/MS.	5	n.d.
Dibromodiphenyl ether	5	n.d.				
Tribromodiphenyl ether	5	n.d.				
Tetrabromodiphenyl ether	5	n.d.				
Pentabromodiphenyl ether	5	n.d.				
Hexabromodiphenyl ether	5	n.d.				
Heptabromodiphenyl ether	5	n.d.				
Octabromodiphenyl ether	5	n.d.				
Nonabromodiphenyl ether	5	n.d.				
Decabromodiphenyl ether	5	n.d.				

Unless otherwise stated the results shown in this test report refer only to the sample(s) tested. This test report cannot be reproduced, except in full, without prior written permission of the Company. 除非另有說明，此報告結果僅對測試之樣品負責。本報告未經本公司書面許可，不可部分複製。
This document is issued by the Company subject to its General Conditions of Service printed overleaf, available on request or accessible at www.sgs.com/terms_and_conditions.htm and, for electronic format documents, subject to Terms and Conditions for Electronic Documents at www.sgs.com/terms_e-document.htm. Attention is drawn to the limitation of liability, indemnification and jurisdiction issues defined therein. Any holder of this document is advised that information contained hereon reflects the Company's findings at the time of its intervention only and within the limits of Client's instructions, if any. The Company's sole responsibility is to its Client and this document does not exonerate parties to a transaction from exercising all their rights and obligations under the transaction documents. This document cannot be reproduced except in full, without prior written approval of the Company. Any unauthorized alteration, forgery or falsification of the content or appearance of this document is unlawful and offenders may be prosecuted to the fullest extent of the law.

WELON ELECTRONIC ENTERPRISE CORP.
 NO.123, GUOXUAN RD., GANGSHAN DIST., KAOHSIUNG CITY 820, TAIWAN
 (R.O.C.)

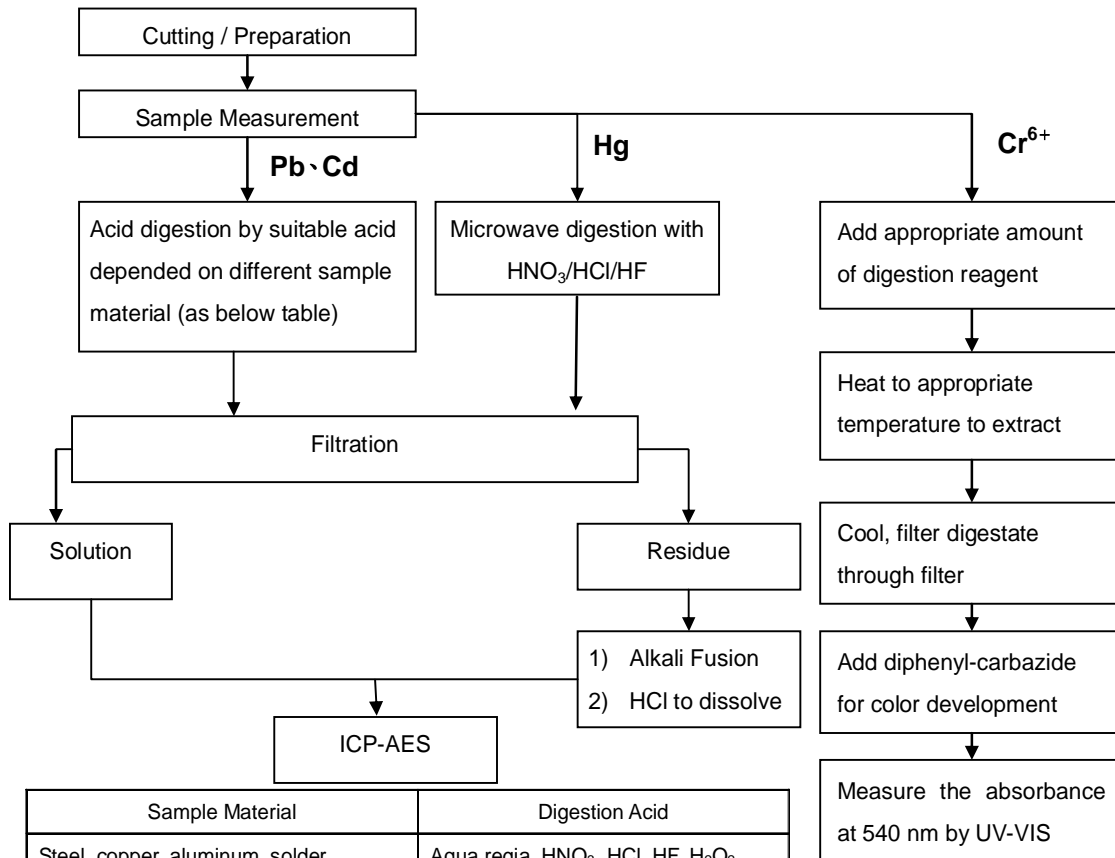
Test Item (s):	Unit	Method	MDL	Result
				No.1
Hexabromocyclododecane (HBCDD) (CAS No.: 25637-99-4)	mg/kg	With reference to US EPA 3540C: 1996 method. Analysis was performed by GC/MS.	5	n.d.
DEHP (Di- (2-ethylhexyl) phthalate) (CAS No.: 117-81-7)	%	With reference to EN 14372. Analysis was performed by GC/MS.	0.003	n.d.
BBP (Benzyl butyl phthalate) (CAS No.: 85-68-7)	%	With reference to EN 14372. Analysis was performed by GC/MS.	0.003	n.d.
DBP (Dibutyl phthalate) (CAS No.: 84-74-2)	%	With reference to EN 14372. Analysis was performed by GC/MS.	0.003	n.d.

- Note :
1. mg/kg = ppm ; 0.1wt% = 1000ppm
 2. n.d. = Not Detected
 3. MDL = Method Detection Limit
 4. " - " = Not Regulated
 5. The sample(s) was/were analyzed on behalf of the applicant as mixing sample in one testing.
 The above result(s) was/were only given as the informality value.

Unless otherwise stated the results shown in this test report refer only to the sample(s) tested. This test report cannot be reproduced, except in full, without prior written permission of the Company. 除非另有說明，此報告結果僅對測試之樣品負責。本報告未經本公司書面許可，不可部分複製。
 This document is issued by the Company subject to its General Conditions of Service printed overleaf, available on request or accessible at www.sgs.com/terms_and_conditions.htm and, for electronic format documents, subject to Terms and Conditions for Electronic Documents at www.sgs.com/terms_e-document.htm. Attention is drawn to the limitation of liability, indemnification and jurisdiction issues defined therein. Any holder of this document is advised that information contained hereon reflects the Company's findings at the time of its intervention only and within the limits of Client's instructions, if any. The Company's sole responsibility is to its Client and this document does not exonerate parties to a transaction from exercising all their rights and obligations under the transaction documents. This document cannot be reproduced except in full, without prior written approval of the Company. Any unauthorized alteration, forgery or falsification of the content or appearance of this document is unlawful and offenders may be prosecuted to the fullest extent of the law.

WELON ELECTRONIC ENTERPRISE CORP.
 NO.123, GUOXUAN RD., GANGSHAN DIST., KAOHSIUNG CITY 820, TAIWAN
 (R.O.C.)

- 1) These samples were dissolved totally by pre-conditioning method according to below flow chart. (Cr6+ test method excluded)
- 2) Name of the person who made measurement: Alex Chang
- 3) Name of the person in charge of measurement: Ray Chang



Sample Material	Digestion Acid
Steel, copper, aluminum, solder	Aqua regia, HNO ₃ , HCl, HF, H ₂ O ₂
Glass	HNO ₃ /HF
Gold, platinum, palladium, ceramic	Aqua regia
Silver	HNO ₃
Plastic	H ₂ SO ₄ , H ₂ O ₂ , HNO ₃ , HCl
Others	Any acid to total digestion

Note :** (1) For non-metallic material, add alkaline digestion reagent and heat to 90~95°C.
 (2) For metallic material, add pure water and heat to boiling.

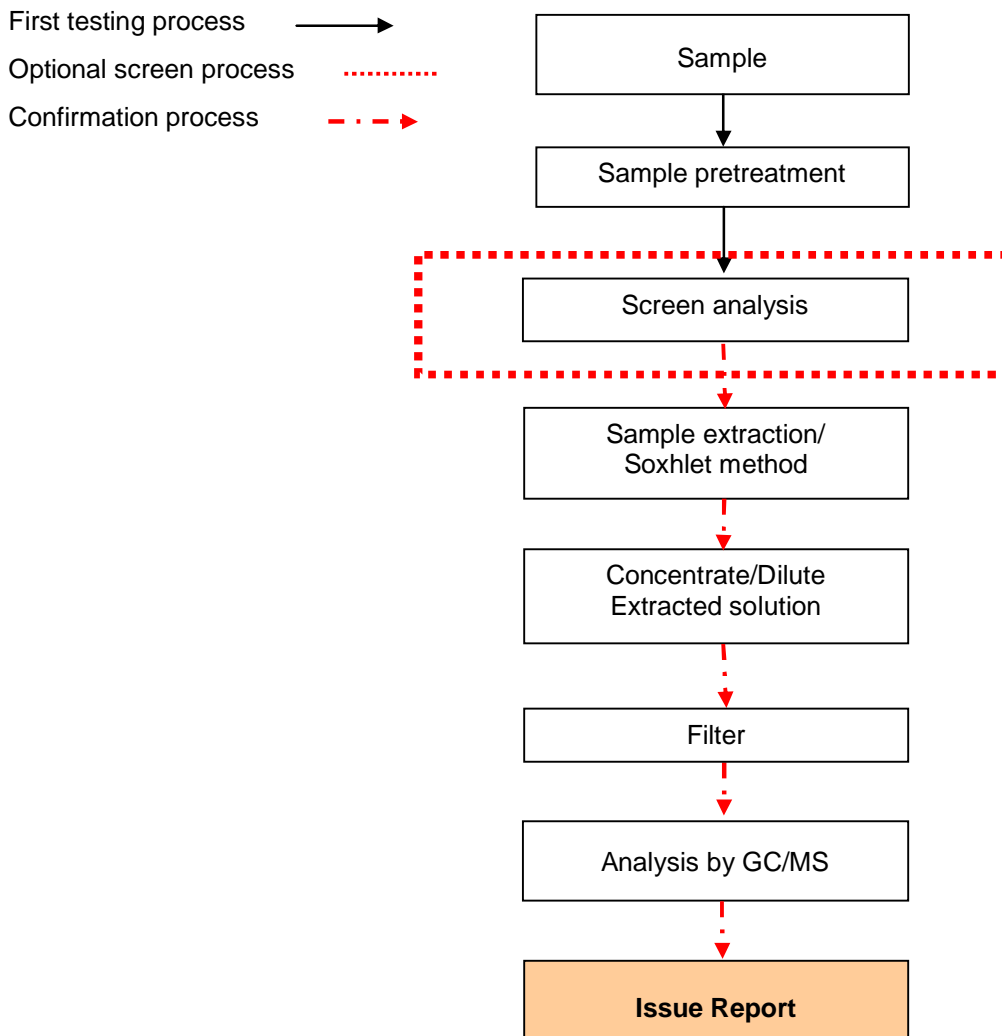
Unless otherwise stated the results shown in this test report refer only to the sample(s) tested. This test report cannot be reproduced, except in full, without prior written permission of the Company. 除非另有說明，此報告結果僅對測試之樣品負責。本報告未經本公司書面許可，不可部分複製。
 This document is issued by the Company subject to its General Conditions of Service printed overleaf, available on request or accessible at www.sgs.com/terms_and_conditions.htm and, for electronic format documents, subject to Terms and Conditions for Electronic Documents at www.sgs.com/terms_e-document.htm. Attention is drawn to the limitation of liability, indemnification and jurisdiction issues defined therein. Any holder of this document is advised that information contained hereon reflects the Company's findings at the time of its intervention only and within the limits of Client's instructions, if any. The Company's sole responsibility is to its Client and this document does not exonerate parties to a transaction from exercising all their rights and obligations under the transaction documents. This document cannot be reproduced except in full, without prior written approval of the Company. Any unauthorized alteration, forgery or falsification of the content or appearance of this document is unlawful and offenders may be prosecuted to the fullest extent of the law.

WELON ELECTRONIC ENTERPRISE CORP.
 NO.123, GUOXUAN RD., GANGSHAN DIST., KAOHSIUNG CITY 820, TAIWAN
 (R.O.C.)

PBB/PBDE analytical FLOW CHART

1) Name of the person who made measurement: Anson Tsao

2) Name of the person in charge of measurement: Ray Chang

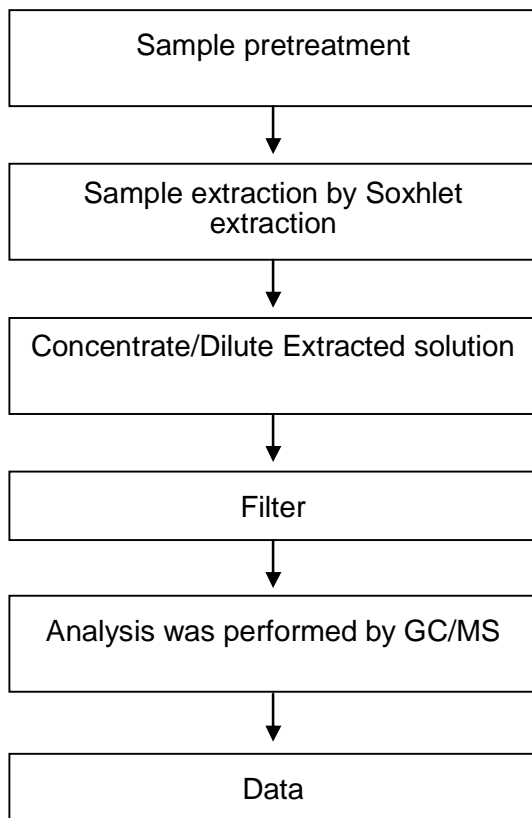


Unless otherwise stated the results shown in this test report refer only to the sample(s) tested. This test report cannot be reproduced, except in full, without prior written permission of the Company. 除非另有說明，此報告結果僅對測試之樣品負責。本報告未經本公司書面許可，不可部分複製。
 This document is issued by the Company subject to its General Conditions of Service printed overleaf, available on request or accessible at www.sgs.com/terms_and_conditions.htm and, for electronic format documents, subject to Terms and Conditions for Electronic Documents at www.sgs.com/terms_e-document.htm. Attention is drawn to the limitation of liability, indemnification and jurisdiction issues defined therein. Any holder of this document is advised that information contained hereon reflects the Company's findings at the time of its intervention only and within the limits of Client's instructions, if any. The Company's sole responsibility is to its Client and this document does not exonerate parties to a transaction from exercising all their rights and obligations under the transaction documents. This document cannot be reproduced except in full, without prior written approval of the Company. Any unauthorized alteration, forgery or falsification of the content or appearance of this document is unlawful and offenders may be prosecuted to the fullest extent of the law.

WELON ELECTRONIC ENTERPRISE CORP.
 NO.123, GUOXUAN RD., GANGSHAN DIST., KAOHSIUNG CITY 820, TAIWAN
 (R.O.C.)

HBCDD Analytical FLOW CHART

- 1) Name of the person who made measurement: Anson Tsao
- 2) Name of the person in charge of measurement: Ray Chang

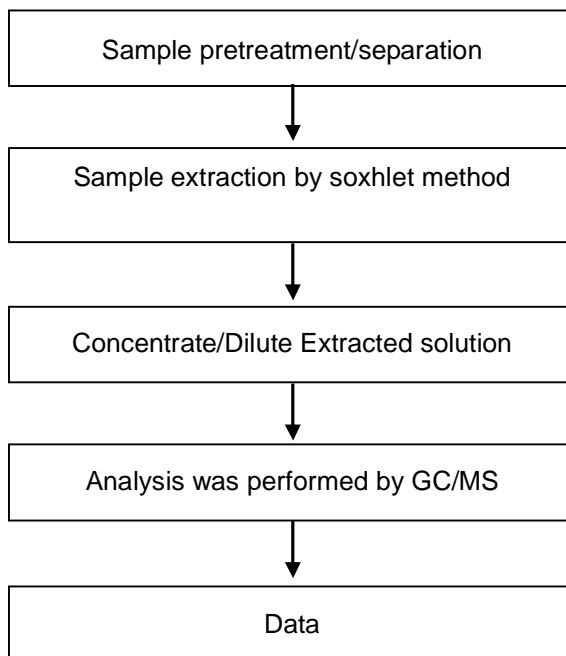


Unless otherwise stated the results shown in this test report refer only to the sample(s) tested. This test report cannot be reproduced, except in full, without prior written permission of the Company. 除非另有說明，此報告結果僅對測試之樣品負責。本報告未經本公司書面許可，不可部分複製。
 This document is issued by the Company subject to its General Conditions of Service printed overleaf, available on request or accessible at www.sgs.com/terms_and_conditions.htm and, for electronic format documents, subject to Terms and Conditions for Electronic Documents at www.sgs.com/terms_e-document.htm. Attention is drawn to the limitation of liability, indemnification and jurisdiction issues defined therein. Any holder of this document is advised that information contained hereon reflects the Company's findings at the time of its intervention only and within the limits of Client's instructions, if any. The Company's sole responsibility is to its Client and this document does not exonerate parties to a transaction from exercising all their rights and obligations under the transaction documents. This document cannot be reproduced except in full, without prior written approval of the Company. Any unauthorized alteration, forgery or falsification of the content or appearance of this document is unlawful and offenders may be prosecuted to the fullest extent of the law.

WELON ELECTRONIC ENTERPRISE CORP.
 NO.123, GUOXUAN RD., GANGSHAN DIST., KAOHSIUNG CITY 820, TAIWAN
 (R.O.C.)

Analytical flow chart of phthalate content

- 1) Name of the person who made measurement: Anson Tsao
- 2) Name of the person in charge of measurement: Ray Chang

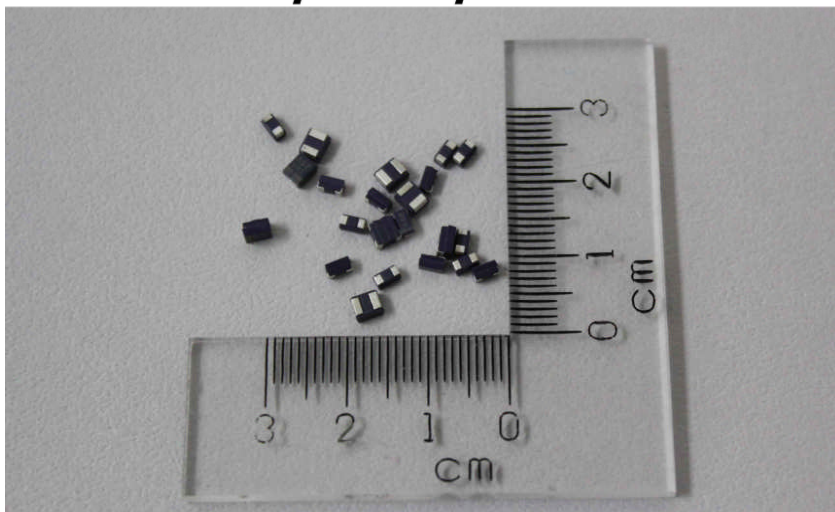


Unless otherwise stated the results shown in this test report refer only to the sample(s) tested. This test report cannot be reproduced, except in full, without prior written permission of the Company. 除非另有說明，此報告結果僅對測試之樣品負責。本報告未經本公司書面許可，不可部分複製。
 This document is issued by the Company subject to its General Conditions of Service printed overleaf, available on request or accessible at www.sgs.com/terms_and_conditions.htm and, for electronic format documents, subject to Terms and Conditions for Electronic Documents at www.sgs.com/terms_e-document.htm. Attention is drawn to the limitation of liability, indemnification and jurisdiction issues defined therein. Any holder of this document is advised that information contained hereon reflects the Company's findings at the time of its intervention only and within the limits of Client's instructions, if any. The Company's sole responsibility is to its Client and this document does not exonerate parties to a transaction from exercising all their rights and obligations under the transaction documents. This document cannot be reproduced except in full, without prior written approval of the Company. Any unauthorized alteration, forgery or falsification of the content or appearance of this document is unlawful and offenders may be prosecuted to the fullest extent of the law.

WELON ELECTRONIC ENTERPRISE CORP.
NO.123, GUOXUAN RD., GANGSHAN DIST., KAOHSIUNG CITY 820, TAIWAN
(R.O.C.)

* The tested sample / part is marked by an arrow if it's shown on the photo. *

KA/2013/40887



** End of Report **

Unless otherwise stated the results shown in this test report refer only to the sample(s) tested. This test report cannot be reproduced, except in full, without prior written permission of the Company. 除非另有說明，此報告結果僅對測試之樣品負責。本報告未經本公司書面許可，不可部分複製。
This document is issued by the Company subject to its General Conditions of Service printed overleaf, available on request or accessible at www.sgs.com/terms_and_conditions.htm and, for electronic format documents, subject to Terms and Conditions for Electronic Documents at www.sgs.com/terms_e-document.htm. Attention is drawn to the limitation of liability, indemnification and jurisdiction issues defined therein. Any holder of this document is advised that information contained hereon reflects the Company's findings at the time of its intervention only and within the limits of Client's instructions, if any. The Company's sole responsibility is to its Client and this document does not exonerate parties to a transaction from exercising all their rights and obligations under the transaction documents. This document cannot be reproduced except in full, without prior written approval of the Company. Any unauthorized alteration, forgery or falsification of the content or appearance of this document is unlawful and offenders may be prosecuted to the fullest extent of the law.